

# E20-530

## EMC

### Network Storage - SAN Specialist

*OfficialCerts.com is a reputable IT certification examination guide, study guides and audio exam provider. We ensure that you pass your E20-530 exam in first attempt and also get high scores to acquire EMC certification.*

*If you use OfficialCerts E20-530 Certification questions and answers, you will experience actual E20-530 exam questions/answers. We know exactly what is needed and have all the exam preparation material required to pass the exam. Our EMC exam prep covers over 95% of the questions and answers that may be appeared in your E20-530 exam. Every point from pass4sure E20-530 PDF, E20-530 review will help you take EMC E20-530 exam much easier and become EMC certified.*

*Here's what you can expect from the OfficialCerts EMC E20-530 course:*

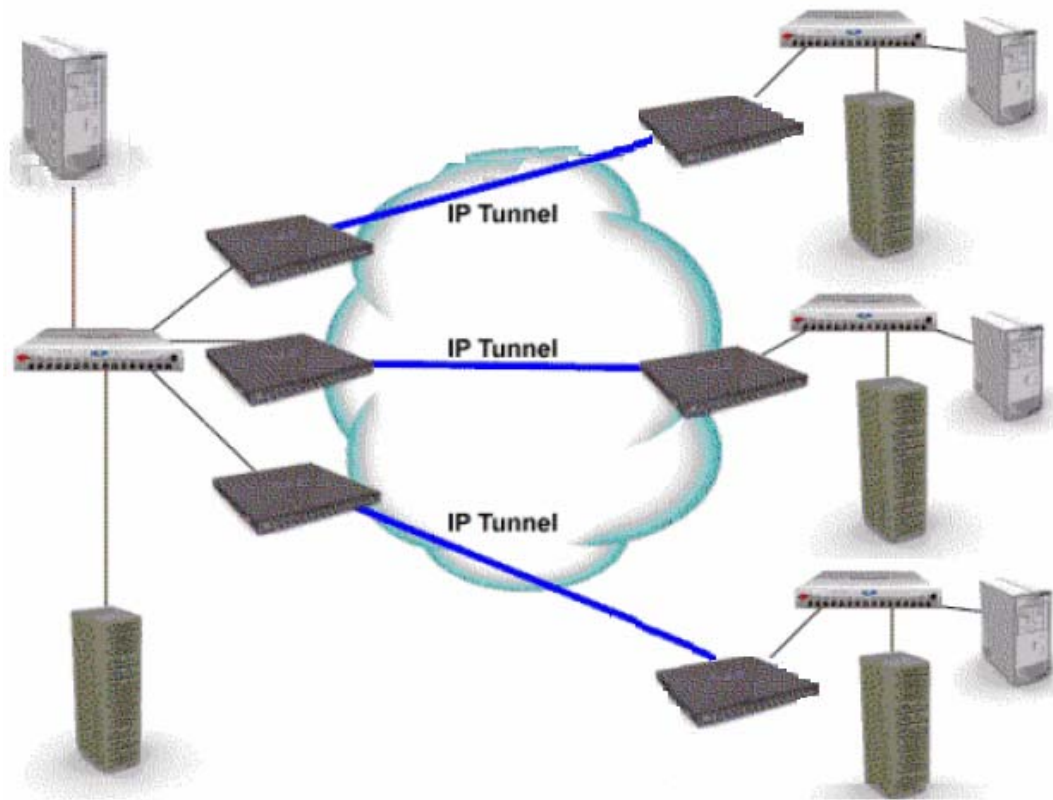
- \* Up-to-Date EMC E20-530 questions as experienced in the real exam.*
- \* 100% correct EMC E20-530 answers you simply can't find in other E20-530 courses.*
- \* All of our tests are easy to download. Your file will be saved as a E20-530 PDF.*
- \* EMC E20-530 brain dump free content featuring the real E20-530 test questions.*

*EMC E20-530 certification exam is of core importance both in your Professional life and EMC certification path. With EMC certification you can get a good job easily in the market and get on your path for success. Professionals who passed EMC E20-530 exam training are an absolute favorite in the industry. You will pass EMC E20-530 certification test and career opportunities will be open for you.*

<http://www.officialcerts.com/exams.asp?examcode=E20-530>



**Question: 1**  
Exhibit



When scaling a FCIP extended network, what must be taken into account prior to merging the SANs?

- A. Process for future firmware upgrades.
- B. Traffic flows could be disrupted should a storage switch go down.
- C. The combined number of devices in the new FCIP extended SAN.
- D. Inter-switch communication, domain and zone management, and VSANs.

**Answer: D**

**Question: 2**

What is the difference between the native long-wave Fibre Channel distance that EMC supports vs. what Cisco supports?

- A. EMC: 10 km, Cisco: 35km
- B. EMC: 20 km, Cisco: 15km
- C. EMC: 35 km, Cisco: 10km
- D. EMC: 35 km, Cisco: 15km

**Answer: C**

**Question: 3 DRAG DROP**

Which sequence of steps must be performed to complete an online firmware upgrade of a target Switch in an environment with dual fabrics; Power Path, and hosts which are NOT configured to EMC standards?

Steps in order	Steps to be moved
Place first step here	Perform the firmware upgrade
Place second step here	Test the HBA and port functionality
Place third step here	Restart the EMC Control Center FCC agent
Place fourth step here	Deactivate the paths through the target switch
Place fifth step here	Reactivate the paths through the target switch
Place sixth step here	Shutdown the EMC Control Center FCC agent
	Document host HBA port and cable configurations
	Reconcile host cabling with the zoning and LUN masking databases

**Answer: Pending. Send your suggestion to [feedback@SelfExamEngine.com](mailto:feedback@SelfExamEngine.com)**

**Question: 4**

How many M-series Products on a single service processor can be supported by Connectrix manager?

- A. 16
- B. 32
- C. 48
- D. 64

**Answer: C**

**Question: 5**

Which command is used to determine if the Connectrix Service Processor can communicate to the FCC agent host?

- A. ping
- B. tracert
- C. netstat
- D. ifconfig

**Answer: A**

**Question: 6**

How can it be verified that the Control Center Server is available on TCP port 5799?

- A. srvmgr
- B. netstat -a
- C. ping console ltype -m
- D. ping localhost -p 5799

**Answer: B**

**Question: 7**

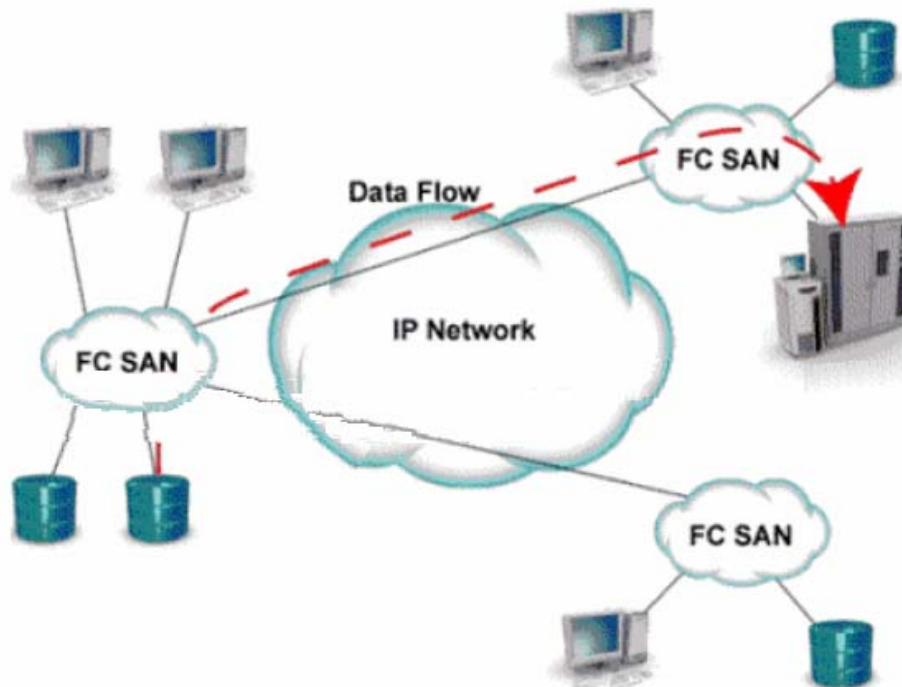
Which two [2] features apply to both the MDS-9120 and the MDS-9140 switches?

- A. All port are non-blocking
- B. Provides "host optimized" ports
- C. Supports SANtegrity Security Suite
- D. Provides "bandwidth optimized" ports

**Answer: B, D**

**Question: 8**

Exhibit.



What is represented by the flow in the picture?

- A. ISCI representation of remote DR
- B. IFCP representation of remote DR
- C. IFCP representation of remote backup
- D. ISCSI representation of remote backup

## OfficialCerts.com Certification Exam Full Version Features;

- Verified answers researched by industry experts.
- Exams **updated** on regular basis.
- Questions, Answers are downloadable in **PDF** format.
- **No authorization** code required to open exam.
- **Portable** anywhere.
- 100% success **Guarantee**.
- **Fast**, helpful support 24x7.

View list of All exams we offer;

<http://www.officialcerts.com/allexams.asp>

To contact our Support;

<http://www.officialcerts.com/support.asp>

View FAQs

<http://www.officialcerts.com/faq.asp>

Download All Exams Samples

<http://www.officialcerts.com/samples.asp>

To purchase Full Version and updated exam;

<http://www.officialcerts.com/allexams.asp>



Shop now using **PayPal**



3COM	CompTIA	Filemaker	IBM	LPI	OMG	Sun
ADOBE	ComputerAssociates	Fortinet	IISFA	McAfee	Oracle	Sybase
APC	CWNP	Foundry	Intel	McData	PMI	Symantec
Apple	DELL	Fujitsu	ISACA	Microsoft	Polycom	TeraData
BEA	ECCouncil	GuidanceSoftware	ISC2	Mile2	RedHat	TIA
BICSI	EMC	HDI	ISEB	NetworkAppliance	Sair	Tibco
CheckPoint	Enterasys	Hitachi	ISM	Network-General	SASInstitute	TruSecure
Cisco	ExamExpress	HP	Juniper	Nokia	SCP	Veritas
Citrix	Exin	Huawei	Legato	Nortel	See-Beyond	Vmware
CIW	ExtremeNetworks	Hyperion	Lotus	Novell	Google	

*You have made the*  
**Right Choice**

You are becoming member of most comprehensive, accurate, highest quality and lowest cost certification resource in the world.

